



ST. ANNE'S COLLEGE OF ENGINEERING AND TECHNOLOGY

(Approved by AICTE, New Delhi. Affiliated to Anna University, Chennai)

ANGUCHETTYPALAYAM, PANRUTI – 607 106.

4.3 IT INFRASTRUCTURE

4.3.1 Institution frequently updates its IT facilities and provides sufficient bandwidth for internet connection

Sl. NO.	NAME OF IT FACILITIES
1.	CEEMS ERP
2.	Wi-Fi
3.	Computers
4.	CCTV
5.	Network Switch
6.	Server
7.	Licensed Software's
8.	Printers
9.	Scanners
10.	UPS
11.	Photocopy Machine
12.	Intercom
13.	Projector
14.	Smartboard
15.	LAN
16.	Barcode Scanner
17.	Barcode Printer
18.	Biometric Device
19.	Staff Mail ID (individual)



ST. ANNE'S COLLEGE OF ENGINEERING AND TECHNOLOGY

(Approved by AICTE, New Delhi. Affiliated to Anna University, Chennai)

ANGUCHETTYPALAYAM, PANRUTI – 607 106.

CEEMS ERP

St. Anne's College of Engineering and Technology provides an extensive infrastructure for providing quality education. This document provides a management framework and procedure for the maintenance of existing infrastructure facilities by general maintenance, IT maintenance, Academic maintenance, and Transport maintenance.

Web Management Portal – For IT maintenance

A customized ERP: <https://stannescet.ac.in/cms/> is exclusively created for maintenance.

For the request of service / maintenance, staff / student login to their account

Home → Maintenance → New Maintenance → write their request.

Based on the request category,

- General maintenance request goes to Administrative officer.
- IT maintenance request goes to System admin.**
- Academic maintenance request goes to Vice Principal / Purchase officer.
- Transport maintenance request goes to transport manager.

After the maintenance is done, status in the portal is updated by the concern officer. Same can be viewed in staff / student login.

Home → Maintenance → Maintenance status

IT Maintenance

System admin. receive the IT maintenance request and directs System analyst / CSE lab assistants based on the request. System admin. looks over the maintenance of Computers, UPS facilities, Audio and Visual Services, CCTV Cameras and Intercom. Maintenance of the reprographic machine is provided by manufacturer of the facility and Enteral Service Provider (ESP). Campus Wi-Fi is maintained by System Admin.



ST. ANNE'S COLLEGE OF ENGINEERING AND TECHNOLOGY

(Approved by AICTE, New Delhi. Affiliated to Anna University, Chennai)

ANGUCHETTYPALAYAM, PANRUTI – 607 106.

CEEMS ERP FRONT PAGE

St. ANNES College of Engineering x +
stannescet.ac.in/cms/

 Student Information System Click to Enter	 Staff Management System Click to Enter	 Exam Management System Click to Enter
 Instrument Maintenance System Click to Enter	 Administrative Management System Click to Enter	 Website Management System Click to Enter

St. ANNES College of Engineering x +
stannescet.ac.in/cms/

 Fees Management System Click to Enter	 Hostel Management System Click to Enter	 Library Management System Click to Enter
 Alumni Management System Click to Enter	 Feedback Management System Click to Enter	



ST. ANNE'S COLLEGE OF ENGINEERING AND TECHNOLOGY

(Approved by AICTE, New Delhi. Affiliated to Anna University, Chennai)

ANGUCHETTYPALAYAM, PANRUTI – 607 106.

Wi-Fi

BANDWIDTH DETAILS OF INTERNET CONNECTION

Number of computers with access to internet	Bandwidth of leased line connection	LAN configuration and speed
106	150 MBPS	150 MBPS
120	200 MBPS	200 MBPS
120	200 MBPS	200 MBPS
Fax	30 MBPS	30 MBPS

SANCET Institution computer laboratory with high speed internet are available to conduct mock tests and online tests for placement. The Institution has **346** Computers connected through LAN. The Institution has adequate facilities of the information technologies including Wi -Fi and the internet connections that are well spread throughout the campus which is updated frequently for the improvement of student's welfare. The computer systems are upgraded periodically. As per syllabus updating the required software is purchased and license will be renewed. The internet bandwidth connectivity is upgraded based on the requirement to provide quality internet connectivity. Wi-Fi is provided for the entire campus and it is upgraded often. Anti-virus software has been installed to ensure better security.

The speed of the internet is upgraded as follows

2018 - Upgraded to 16 Mbps from 8 Mbps - AIRTEL communication internet leased line

2019 - Upgraded to 32 Mbps from 16 Mbps - AIRTEL communication internet leased line

2020 - Upgraded to 100 Mbps from 32 Mbps - AIRTEL communication internet leased line

2021 - Upgraded to 150 Mbps from 100 Mbps - AIRTEL communication internet leased line

2022 - Upgraded to 200 Mbps from 150 Mbps - AIRTEL communication internet leased line

2022 – New Line 200 Mbps– AIRTEL communication internet leased line

2022 – New Line 150 Mbps– BSNL

2023- New Line 30 Mbps- BSNL (FAX)



ST. ANNE'S COLLEGE OF ENGINEERING AND TECHNOLOGY

(Approved by AICTE, New Delhi. Affiliated to Anna University, Chennai)

ANGUCHETTYPALAYAM, PANRUTI – 607 106.

Wi-Fi





ST. ANNE'S COLLEGE OF ENGINEERING AND TECHNOLOGY

(Approved by AICTE, New Delhi. Affiliated to Anna University, Chennai)

ANGUCHETTYPALAYAM, PANRUTI – 607 106.

Institution frequently updates its IT Facilities including Wi-Fi

DEPARTMENT OF COMPUTER SCIENCE AND ENGINEERING

Si. No.	Year Of Purchase	Details	Location	No. of System
1	2009	Hclcomputers,Intel core 2 gbRAM,Hard disk 250 gb,18.5 tft monitor	Computer Laboratory-I	13
2	2010	Hp Computers,Intel core 2 gbRAM,Hard disk 250 gb,18.5 tft monitor	Computer Laboratory-I	20
3	2010	Hclcomputers,Intel core 2 gbRAM,Hard disk 250 gb,18.5 tft monitor	Computer Laboratory-II	30
4	2012	Hp computers,Intel core 2 gbRAM,Hard disk 250 gb,18.5 tft monitor	Computer Laboratory-IV	8
5	2011	Lenovo,Intel core 2 gbRAM,Hard disk 250 gb 18.5 tft monitor	Computer Laboratory-IV	10
6	2010	Hclcomputer,Intel core 2 gbRAM,Hard disk 250 gb,18.5 tft monitor	Computer Laboratory-IV	10
7	2019	Dell computer, Intel core 4 gb RAM, Hard disk 500 gb,19.5 tft monitor	Computer Laboratory-IV	6
8	2010	Hp computer,Intel core 2 gbRAM,Hard disk 250 gb,18.5 tft monitor	Computer Laboratory-V	20
9	2014	Dell computer, Intel core 4 gb RAM, Hard disk 256 gb,19.5 tft monitor	Computer Laboratory-V	10
10	2021	Dell computer, Intel core 4 gb RAM, Hard disk 256 gb,18.5 tft monitor	Computer Laboratory-V	5
TOTAL				132



ST. ANNE'S COLLEGE OF ENGINEERING AND TECHNOLOGY

(Approved by AICTE, New Delhi. Affiliated to Anna University, Chennai)

ANGUCHETTYPALAYAM, PANRUTI – 607 106.

Computer Laboratory-I



Computer Laboratory-II





ST. ANNE'S COLLEGE OF ENGINEERING AND TECHNOLOGY

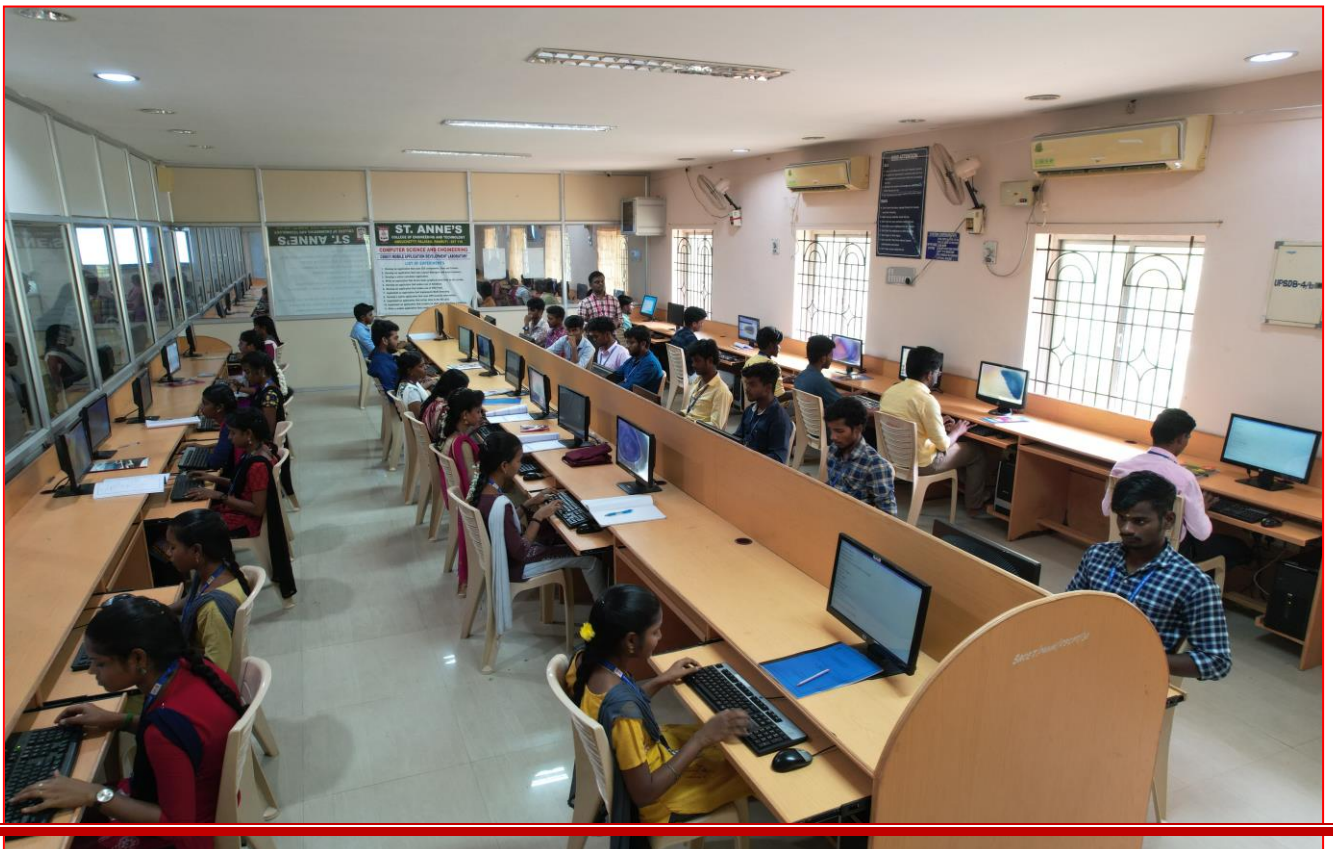
(Approved by AICTE, New Delhi. Affiliated to Anna University, Chennai)

ANGUCHETTYPALAYAM, PANRUTI – 607 106.

Computer Laboratory-IV



Computer Laboratory-V





ST. ANNE'S COLLEGE OF ENGINEERING AND TECHNOLOGY

(Approved by AICTE, New Delhi. Affiliated to Anna University, Chennai)

ANGUCHETTYPALAYAM, PANRUTI – 607 106.

DEPARTMENT OF ELECTRONICS AND COMMUNICATION ENGINEERING

Si. No.	Year Of Purchase	Details	Location	No. of System
1	2009	Hcl computer, Intel core 2 gb RAM, Hard disk 250 gb 18.5 tft monitor	VLSI / DSP Laboratory	1
2	2019	Dell computer, Intel core 4 gb RAM, Hard disk 500 gb 18.5 tft monitor	VLSI / DSP Laboratory	2
3	2010	Hp computer, Intel core 2 gbRAM, Hard disk 250 gb 18.5 tft monitor	VLSI / DSP Laboratory	26
4	2015	Hp computer, Intel core 2 gbRAM, Hard disk 250 gb 19.5 tft monitor	IC Lab	15
			Total	44

VLSI / DSP Laboratory





ST. ANNE'S COLLEGE OF ENGINEERING AND TECHNOLOGY

(Approved by AICTE, New Delhi. Affiliated to Anna University, Chennai)

ANGUCHETTYPALAYAM, PANRUTI – 607 106.

DEPARTMENT OF ELECTRICALS AND ELECTRONICS ENGINEERING

Si. No.	Year of Purchase	Details	Location	No. of System
1	2009	Hclcomputer, Intel core 2 gb RAM, Hard disk 250 gb 18.5 tft monitor	PSS Laboratory	2
2	2010	Hp computer, Intel core 2 gb RAM, Hard disk 250 gb 18.5 tft monitor	PSS Laboratory	20
3	2019	Lenova, Intel core 4 gb RAM, Hard disk 500 gb 18.5 tft monitor	PSS Laboratory	7
TOTAL				29

PSS Laboratory





ST. ANNE'S COLLEGE OF ENGINEERING AND TECHNOLOGY

(Approved by AICTE, New Delhi. Affiliated to Anna University, Chennai)

ANGUCHETTYPALAYAM, PANRUTI – 607 106.

DEPARTMENT OF MECHANICAL ENGINEERING

Si. No.	Year Of Purchase	Details	Location	No. of System
1	2010	Hclcomputer, Intel core 2 gbRAM, Hard disk 250 gb 18.5 tft monitor	Strength of Materials Lab	1
2	2018	Dell computer, Intel core 2 gbRAM, Hard disk 250 gb 18.5 tft monitor	CADD/CAM Lab	2
3	2013	Hp computer, Intel core 2 gbRAM, Hard disk 250 gb 18.5 tft monitor	CADD/CAM Lab	32
4	2013	Hpcomputer, Intel core 2 gbRAM, Hard disk 250 gb 18.5 tft monitor	Thermal Lab	1
5	2015	Hclcomputer, Intel core 2 gbRAM, Hard disk 250 gb 18.5 tft monitor	Mechatronics Lab	10
			TOTAL	46

CADD/CAM Laboratory





ST. ANNE'S COLLEGE OF ENGINEERING AND TECHNOLOGY

(Approved by AICTE, New Delhi. Affiliated to Anna University, Chennai)

ANGUCHETTYPALAYAM, PANRUTI – 607 106.

DEPARTMENT OF SCIENCE AND HUMANITIES

Si. No.	Year Of Purchase	Details	Location	No. of System
1	2018	Hcl computer, Intel core 2 gb RAM, Hard disk 250 gb 18.5 tft monitor	Language Laboratory	10
2	2021	Dell computer, Intel core 4 gb RAM, Hard disk 500 gb 18.5 tft monitor	Language Laboratory	6
3	2016	Hp computer, Intel core 2 gbRAM, Hard disk 250 gb 18.5 tft monitor	Language Laboratory	8
4	2013	Hp computer, Intel core 2 gbRAM, Hard disk 320 gb 19.5 tft monitor	Language Laboratory	6
			Total	30

Language Laboratory





ST. ANNE'S COLLEGE OF ENGINEERING AND TECHNOLOGY

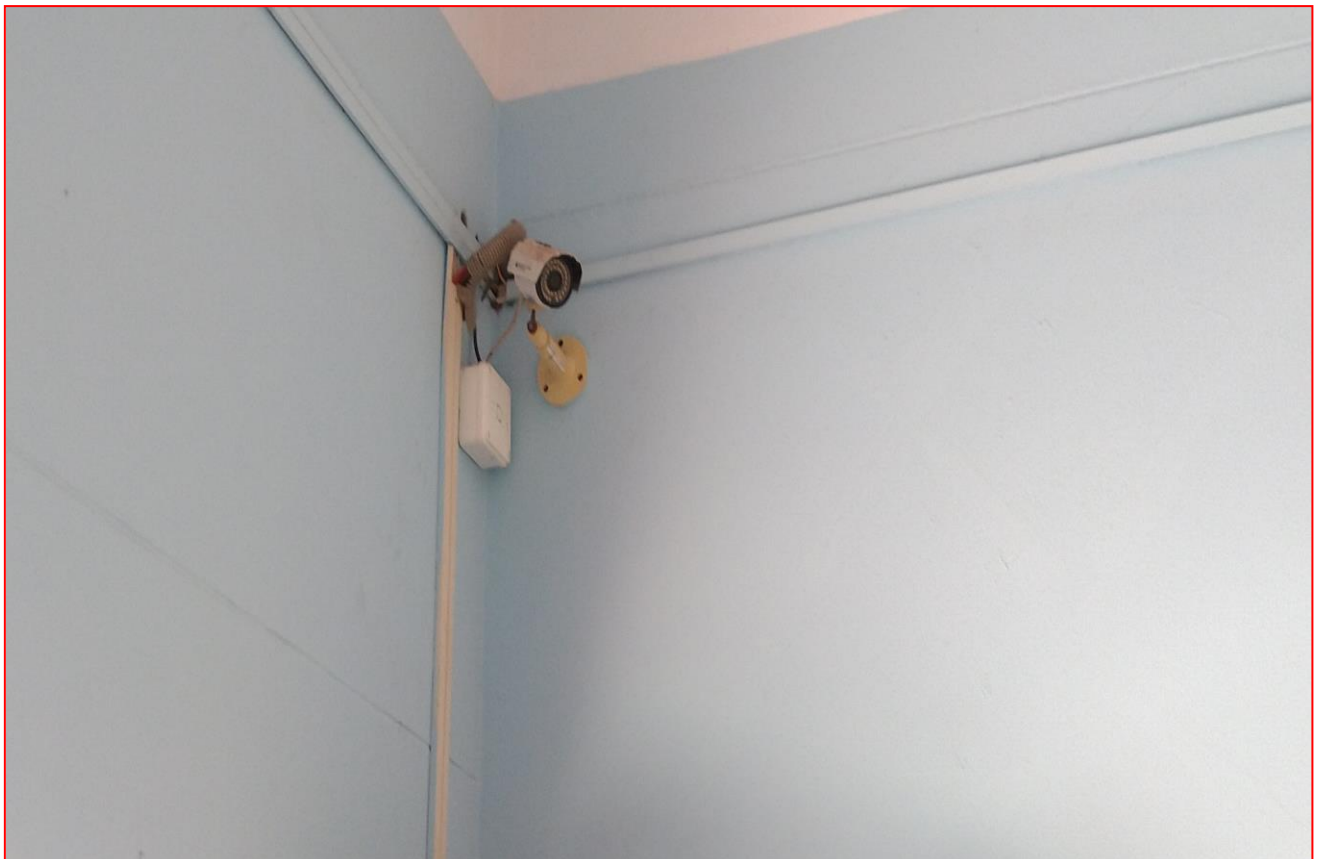
(Approved by AICTE, New Delhi. Affiliated to Anna University, Chennai)

ANGUCHETTYPALAYAM, PANRUTI – 607 106.

CCTV

TOTAL NO OF CCTV = 70

SL. NO.	VENUE	NO. OF CAMERAS
1	Administrative Block	15
2	Annai Annamal Block	14
3	Maria Block	15
4	Xavier Block	21
5	Anne's Café(Canteen)	02
6	Statue	01
7	Entrance Gate	02
TOTAL		70





ST. ANNE'S COLLEGE OF ENGINEERING AND TECHNOLOGY

(Approved by AICTE, New Delhi. Affiliated to Anna University, Chennai)

ANGUCHETTYPALAYAM, PANRUTI – 607 106.

NETWORK SWITCH



SERVER

IBM GEN 2 SERVER

DESCRIPTION: X3400 M2 7837

NEHELAM PROCESSOR INTEL XEON 5504(QUAD CORE-NEHELAM)/250 GB SATA/2 GB

MEMORY/4MB L3 CACHE





ST. ANNE'S COLLEGE OF ENGINEERING AND TECHNOLOGY

(Approved by AICTE, New Delhi. Affiliated to Anna University, Chennai)

ANGUCHETTYPALAYAM, PANRUTI – 607 106.

LISCENCED SOFTWARE'S

S. NO.	DEPARTMENT	SOFTWARE'S
1	Computer Science and Engineering	Oracle, RATIONAL ROSE, MS OFFICE, ORALCLE WINDOWS 10 OS
2	Electrical and Electronics Engineering	MAT 10.0
3	Electronics and Communication Engineering	VISUAL STUDIO,2008 SERVER, Xilinx ISE 12.1, Tanner Tool 16.0, Orcad 16.0, keil, Flash Magic, Scilab 6.11
4	Mechanical Engineering	AUTO CADD 2K10,CREO 2.0, IRON CADD, ANSYS 4.0, CNC MEDIU, FUNOCK TRAIN V8.01

PRINTERS

A) DOT MATRIX





ST. ANNE'S COLLEGE OF ENGINEERING AND TECHNOLOGY

(Approved by AICTE, New Delhi. Affiliated to Anna University, Chennai)

ANGUCHETTYPALAYAM, PANRUTI – 607 106.

B) LASER



SCANNER





ST. ANNE'S COLLEGE OF ENGINEERING AND TECHNOLOGY

(Approved by AICTE, New Delhi. Affiliated to Anna University, Chennai)

ANGUCHETTYPALAYAM, PANRUTI – 607 106.

UPS



PHOTOCOPIER MACHINE





ST. ANNE'S COLLEGE OF ENGINEERING AND TECHNOLOGY

(Approved by AICTE, New Delhi. Affiliated to Anna University, Chennai)

ANGUCHETTYPALAYAM, PANRUTI – 607 106.

INTERCOM



PROJECTOR



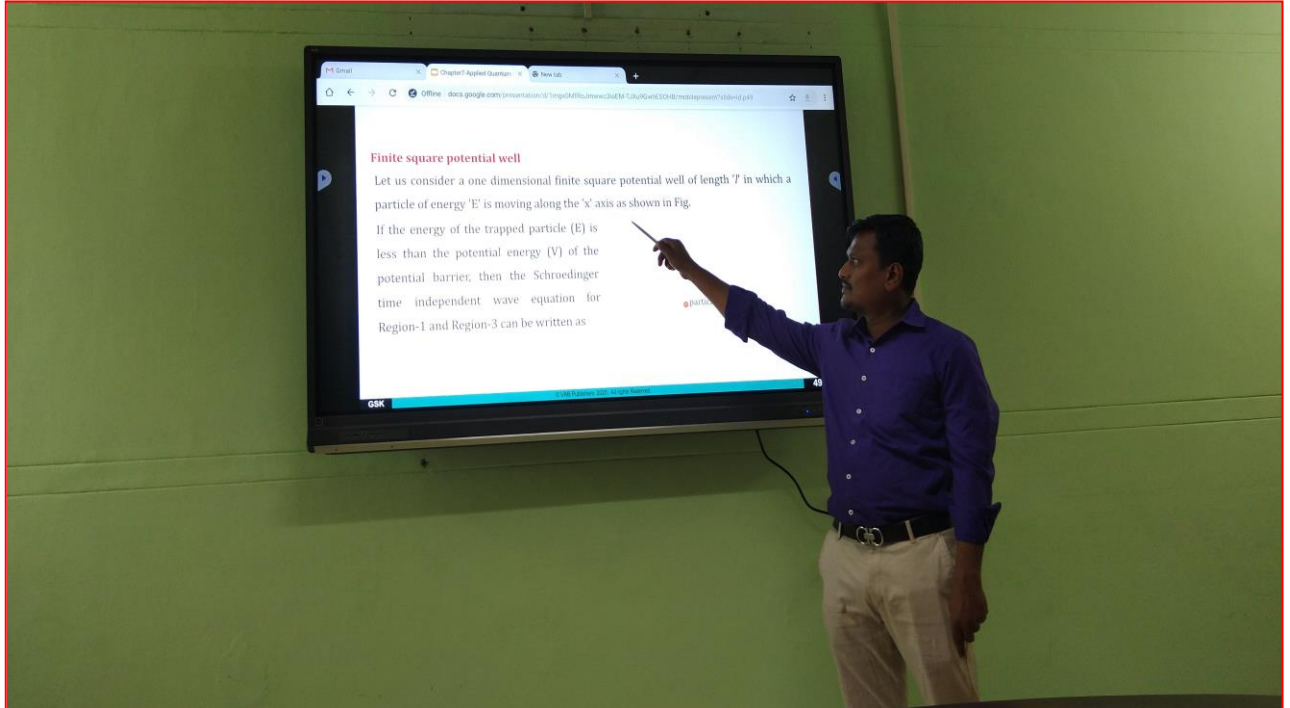


ST. ANNE'S COLLEGE OF ENGINEERING AND TECHNOLOGY

(Approved by AICTE, New Delhi. Affiliated to Anna University, Chennai)

ANGUCHETTYPALAYAM, PANRUTI – 607 106.

SMART BOARD





ST. ANNE'S COLLEGE OF ENGINEERING AND TECHNOLOGY

(Approved by AICTE, New Delhi. Affiliated to Anna University, Chennai)

ANGUCHETTYPALAYAM, PANRUTI – 607 106.

LOCAL AREA NETWORK (LAN)

INTERNET CABLE -FIBRE OPTICAL CABLE

CABLE DETAILS LAN CABLE- CAT 6, CAT 5

S. Suresamy Nagar, Porur, Chennai - 112
allwininfoteckh@gmail.com

Date : August 01, 2011

To
The Principal,
St. Annes College of Engineering and Technology,
Panruti.

Sir
Sub: Quotation for Computer Lab Network Proposal for 183 Systems - Reg.

With reference to the discussion the undersigned had with you regarding to Network Cabling Proposal for your 4 Computer Labs for 183 Systems; we wish offer our lowest rate for the same as per the details furnished hereunder:

Active and Passive Components					
Sl. No	Description	Quantity	Per	Unit Price	Total with Tax
1	Cat 6 Digi - Link Cable	16	Boxes	6,100.00	97,600.00
2	Cat 6 Digi - Link I/O with Face Plate	183	Nos.	290.00	53,070.00
3	Cat 6 Patchcord 1 Mt.	375	Nos.	180.00	67,500.00
4	9 U Rack HCL	4	No.	3,900.00	15,600.00
5	Cat 6 Patch Panel - 24 Port	8	Nos.	5,600.00	44,800.00
6	Cisco 2024 Gigabit Switch - 24 Port	8	Nos.	18,400.00	1,47,200.00
7	Cable Manager	8	No.	225.00	1,800.00
8	Power Manager	4	Nos.	550.00	2,200.00
9	Gang Box	183	Nos	40.00	7,320.00
					4,37,090.00
Channels and Accessories					
Sl. No	Description	Quantity	Per	Unit Price	Total
1	2525 Duct	180	Mts.	85.00	15,300.00
2	4545 Duct	180	Mts.	120.00	21,600.00
3	PVC Pipe & Accessories	60	Nos	75.00	4,500.00
					41,400.00



ST. ANNE'S COLLEGE OF ENGINEERING AND TECHNOLOGY

(Approved by AICTE, New Delhi. Affiliated to Anna University, Chennai)

ANGUCHETTYPALAYAM, PANRUTI – 607 106.

BARCODE SCANNER



BARCODE PRINTER





ST. ANNE'S COLLEGE OF ENGINEERING AND TECHNOLOGY

(Approved by AICTE, New Delhi. Affiliated to Anna University, Chennai)

ANGUCHETTYPALAYAM, PANRUTI – 607 106.

BIOMETRIC DEVICE





ST. ANNE'S COLLEGE OF ENGINEERING AND TECHNOLOGY

(Approved by AICTE, New Delhi. Affiliated to Anna University, Chennai)

ANGUCHETTYPALAYAM, PANRUTI – 607 106.

SOCIAL MEDIA NETWORK

A) TWITTER

twitter.com/stannescet_prt

St. Anne's College of Engineering and Technol...
262 Tweets

Follow

St. Anne's College of Engineering and Technology
@stannescet_prt

Our aim is to give hope and dignity through education by which character is formed, strength of mind is increased, intellect is expanded.

Panruti(T.K), Cuddalore Distri stannescet.ac.in Joined May 2015

50 Following 74 Followers

Tweets Replies Media Likes

St. Anne's College of Engineering and T... @stanne... · 11 Feb 2022
NSS team has organized a programme on "Career Opportunities in Defence Force" on 09.02.2022. The Chief Guest Mr. R. Jayamurugan,

Don't miss what's happening
People on Twitter are the first to know.

Log in Sign up

B) FACEBOOK

facebook.com/stannescet2009

facebook

Email or phone Password Log in Forgotten account?

CREATE - ILLUMINATE - INSPIRE

St. Anne's
College of Engineering & Technology
(A unit of sisters of St. Anne, Tiruchiranailli)

St. Anne's College of Engineering and Technology
@stannescet2009 · 5 1 review · Science, technology & engineering

Send Message

See more of St. Anne's College of Engineering and Technology on Facebook

Log in or Create new account

Activate Windows
Go to Settings to activate Windows.



ST. ANNE'S COLLEGE OF ENGINEERING AND TECHNOLOGY

(Approved by AICTE, New Delhi. Affiliated to Anna University, Chennai)

ANGUCHETTPALAYAM, PANRUTI – 607 106.

C) INSTAGRAM

facebook - Search | St. Anne's College of Engineering... | St. Anne's College of Engineering... | St. Anne's College of Engineering... | ST. ANNE'S CET (@stannescet_prt)

instagram.com/stannescet_prt/

Instagram Search Log in Sign up

stannescet_prt Follow

239 posts 461 followers 13 following

ST. ANNE'S CET
St. Anne's College of Engineering & Technology | StAnne's CET
https://stannescet.ac.in/
stannescet.ac.in

POSTS TAGGED

The Manager, Principal, NSS Programme Officers & Volunteers cordially invite you for the
"CAREER OPPORTUNITIES IN DEFENCE FORCE"
organized by the
NATIONAL SERVICE SCHEME
on
4th February 2022 at 11.00 a.m.
Venue: St. Anne's C.E.T., Anguchettipalayam.
Mr. R. JAYASBERGAN
Director, Academic, Tamil Nadu Academy, Chennai
and address the students.
Dr. R. ABRAHAMAS
Principal
St. Anne's College of Engineering & Technology

The Tamil Nadu Junior and Senior Slambam Championships were held in the Kanyakumari district on January 26, 27, and 28. Around 400+ participants from various districts of Tamilnadu have participated in this event. We are happy to announce that, our college student S. Mohan Raj, II-Year - Mechanical Engineering Department has participated in the event and won a bronze medal. On behalf of St. Anne's Management, we extend our warm wishes to him.

Activate Windows
Go to Settings to activate Windows.

Type here to search 28°C Partly sunny 19:00 20-03-2023

D) YOUTUBE

facebook - Search | St. Anne's College of Engineering... | St. Anne's College of Engineering... | St. Anne's College of Engineering... | youtube.com/@stannescet_prt/streams

YouTube Search

Home Shorts Subscriptions Library History Watch later Liked videos

Subscriptions Music Sports Gaming Movies

Explore Trending Shopping Music Movies

St. Anne's College of Engineering & Technology
@stannescet_prt 825 subscribers 18 videos
Reading the signs of the times, the congregation of the sisters of St. Anne, ...

HOME LIVE PLAYLISTS COMMUNITY CHANNELS ABOUT

Recently uploaded Popular

ICRDSET-2021: Keynote Address by Dr.M.Phemina Selvi 35:37

ICRDSET-2021: Keynote Address by Dr. S Vengatesan 28:00

ICRDSET-2021: Keynote Address by Dr. Elammaran Jayamani 33:02

ICRDSET-2021: Keynote Address by Dr. Hiroaki Satoh 32:07

Type here to search 28°C Partly sunny 18:55 20-03-2023



ST. ANNE'S COLLEGE OF ENGINEERING AND TECHNOLOGY

(Approved by AICTE, New Delhi. Affiliated to Anna University, Chennai)

ANGUCHETTYPALAYAM, PANRUTI – 607 106.

STAFF'S OFFICIAL MAIL-ID

S. NO	FIRST NAME [REQUIRED]	LAST NAME [REQUIRED]	EMAIL ADDRESS [REQUIRED]
1	ST. ANNE'S CET	(Exam Cell)	alumni@stannescet.ac.in
2	ANNAI THERESA	A	srannaitheresa@stannescet.ac.in
3	ARUL MARTINAL	J	arul17.11.1992@stannescet.ac.in
4	ARUN KUMAR	B	arunkumar@stannescet.ac.in
5	ASMATHUNNISA	Z	zasmath99@stannescet.ac.in
6	BALABASKER	S	balabasker.s@stannescet.ac.in
7	BALABASKER	S	admin@stannescet.ac.in
8	BALAJI	V	vbalaggee@stannescet.ac.in
9	DR. D. OMMURUGADHASAN	(HoD/MECH)	ommurugadhasan@stannescet.ac.in
10	DR. R. AROKIADASS	(Principal)	principal@stannescet.ac.in
11	DR. SR. T. NIRMALA	(Secretary)	secretary@stannescet.ac.in
12	DR.R.AROKIADASS	(Principal)	arokiadass@stannescet.ac.in
13	DR.S.ANITA	S	sranitaa@stannescet.ac.in
14	DURAI RAJ	S	durairajme05@stannescet.ac.in
15	EUGIN MARTIN RAJ	V.C	martincbe24@stannescet.ac.in
16	INDHUMA	E	indhukisai@stannescet.ac.in
17	JAYAKUMAR	R	rvjayakumar@stannescet.ac.in
18	MANAVALAN	S	manavalan3s@stannescet.ac.in
19	MARY AMALA JENNI	B	amalajenni@stannescet.ac.in
20	MR. R. VISWALINGAM	(S&H)	viswaji1802@stannescet.ac.in
21	MURUGAN	P	yuthanmurugan@stannescet.ac.in
22	NIVETHA	P	nivetha179@stannescet.ac.in
23	PAULINE FREEDA	D	freedavid@stannescet.ac.in
24	PRAKASH	V	venkashv141@stannescet.ac.in
25	PRAVEENA	V	praveenaveerapandian@stannescet.ac.in
26	PREMALATHA	M	premalatha@stannescet.ac.in
27	PUNITHA	JILT	punitha@stannescet.ac.in
28	PUNITHA	JILT	punithacse@stannescet.ac.in
29	RADHAKRISHNAN	R	radhakrishnan@stannescet.ac.in
30	RAJ THILAK	D	thilaksacet@stannescet.ac.in
31	RAJARAJAN	S	rajasekar@stannescet.ac.in
32	RAJARAJAN	S	rajansme@stannescet.ac.in
33	RAMESH	J	rameshbluesky@stannescet.ac.in
34	RICHARD PRAVIN	A	a.richardpravin@stannescet.ac.in
35	SAHINIPPIRIYA	M	sahinimani@stannescet.ac.in
36	SARAVANABHAVA	P	saravana21.bhava@stannescet.ac.in
37	SARAVANAN	K	gksaravanan2003@stannescet.ac.in



ST. ANNE'S COLLEGE OF ENGINEERING AND TECHNOLOGY

(Approved by AICTE, New Delhi. Affiliated to Anna University, Chennai)

ANGUCHETTYPALAYAM, PANRUTI – 607 106.

38	SASIKUMAR	R	sasikumar75vpm@stannescet.ac.in
39	SHANMUGA ELANGO	K	shanmugaelango1974@stannescet.ac.in
40	SIVAMANIKANDAN	M	sivamanikandan@stannescet.ac.in
41	SR. JOSEPHINE MARY	A	srantonyjosee@stannescet.ac.in
42	SRIRAM	K	sriram.pse@stannescet.ac.in
43	ST. ANNE'S CET	(CSE DEPT)	cse@stannescet.ac.in
44	ST. ANNE'S CET	(Office)	office@stannescet.ac.in
45	ST. ANNE'S CET	(Placement)	placement@stannescet.ac.in
46	ST. ANNE'S CET	(Library)	library@stannescet.ac.in
47	ST. ANNE'S CET	(EEE Department)	eee@stannescet.ac.in
48	ST. ANNE'S CET	(Media Cell)	media@stannescet.ac.in
9	ST. ANNE'S CET	(Admission cell)	admission@stannescet.ac.in
50	ST. ANNE'S CET	(IQAC)	iqac@stannescet.ac.in
51	ST. ANNE'S CET	(MECH Department)	meh@stannescet.ac.in
52	ST. ANNE'S CET	(Contact)	contact@stannescet.ac.in
53	ST. ANNE'S CET	(Exam Cell)	4221examcell@stannescet.ac.in
54	ST. ANNE'S CET	(ECE Department)	ece@stannescet.ac.in
55	ST. ANNE'S CET	(EDC Cell)	edc@stannescet.ac.in
56	ST. ANNES CET	(NCRDSET)	ncrdset@stannescet.ac.in
57	ST. ANNES' CET	(Web Team)	webteam@stannescet.ac.in
58	ST. ANNE'S CET	(S&H DEPT)	sh@stannescet.ac.in
59	ST. ANNES CET	FDP	fdp@stannescet.ac.in
60	SUNDARA PANDIYAN	A	sundar_08babu@stannescet.ac.in
61	SYED MUBARAK	N	syedmubarakn@stannescet.ac.in
62	UMAMAHESWARI	D	amarkavibalu@stannescet.ac.in
63	VENKATESAN	V	venkatesan@stannescet.ac.in



ST. ANNE'S COLLEGE OF ENGINEERING AND TECHNOLOGY

(Approved by AICTE, New Delhi. Affiliated to Anna University, Chennai)

ANGUCHETTYPALAYAM, PANRUTI – 607 106.

TOTAL NO. OF COMPUTERS

Si. No.	Department	No. of computer
1	Computer Science and Engineering	133
2	Electronics and Communication Engineering	46
3	Electrical and Electronics Engineering	30
4	Mechanical Engineering	47
5	Science and Humanities	34
6	Library	14
7	Research & Development Cell	02
8	Exam Cell	04
9	Administrative	08
10	Training and Placement Cell	01
11	Entrepreneur Development Cell (EDC)	01
12	Incubation Centre(All Department)	20
13	Internal Quality Assurance Cell (IQAC)	02
14	Admission cell	02
15	Conference Hall	01
16	System Admin	01
TOTAL		346